

# Peripheral Arterial Disease

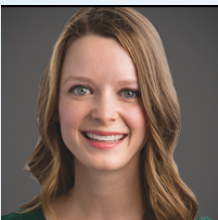


ACS AF/SPAF CKD Dys/Ath NAFL/NASH HF Obesity **PAD** PH T1D T2D VT



**Chung I Choi**  
Senior Director,  
Atherosclerosis

Chung I received her B.A. from University of California, Berkeley in Biochemistry and Political Economics, and brings 20 years of biotechnology and pharmaceutical consulting experience to her clients. Her excellent communication skills, solid business acumen and command of analytical methods enable her to support a wide range of pharma teams. Chung I has been a leader of CVrg's atherosclerosis team since 2008.



**Mallory Harden, Ph.D.**  
Disease Area Manager

Mallory received her Ph.D. in Virology at Harvard University and her B.S. with honors in Neuroscience from Trinity University. As part of her research background, she has extensive capabilities in presenting data at premier science conferences and also brings to CVrg knowledge in competitive intelligence and market landscaping through her experience in a healthcare crossover investment firm.



## CVrg Market Strategies™ report

**Peripheral Arterial Disease, 2018–2027** is a cutting-edge detailed market research report with unmatched scope, depth, and accuracy. This best-in-class resource provides a highly granular assessment of new product development, emerging trends, unmet needs, epidemiology, current treatment and market forecasts. KOL comments, SWOTs, clinical trial tracking, estimations of launch dates and target patient populations are included for products ≥Ph 2 along with regional coverage of USA, EU5, and Japan. Fresh new data and analytical observations gained throughout the year in PAD from CVrg Sentinel, Conference, Insights, and Advisory research are also included.

## CVrg Sentinel™ monthly updates

CVrg continuously monitors how new scientific, clinical, regulatory and market developments are changing the commercial potential of PAD assets. This monthly delivery informs clients about what is happening in the marketplace and how it might affect their products.

## CVrg Conference™ expert coverage

CVrg keeps abreast of cutting edge clinical data by attending cardio-metabolic congresses such as ACC, ESC, and AHA. Our experts carefully analyze the new data presented and deliver incisive, presentation-style reports informing subscriber organizations about what's new, what's important, and why.

## \*CVrg KOL Insights™ primary research

CVrg experts conduct primary research with KOLs in PAD, using their critical eyes to evaluate emerging trends, pipeline products and implications for the field. Clients may review and add to our "omnibus" discussion guides and receive detailed reports and presentations focused on answering the most pressing issues they face today. \*Additional fees may apply.

## CVrg Advisory™ answers to your ad-hoc inquiries

CVrg is uniquely positioned to deliver quick, thorough and reliable answers to non-proprietary questions in PAD drug markets. We are immediately equipped with comprehensive data and put our best methodologies and efforts behind each inquiry so clients receive the most accurate insight possible within a given timeframe.