

Atrial Fibrillation & SPAF



ACS

AF/SPAF

CKD

Dys/Ath

NAFL/NASH

HF

Obesity

PAD

PH

T1D

T2D

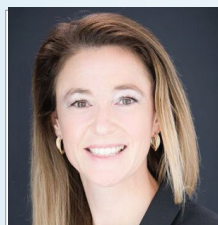
VT



Jennifer Lilla, Ph.D.

Therapy Area Director,
AFib/SPAF

Jennifer received her Ph.D. in Biomedical Sciences from the University of California, San Francisco and postdoctoral training at Stanford University's School of Medicine before joining CVrg. In addition to her solid technical foundation, she brings strong analytic abilities and strategic planning experience as well as communication, writing and presentation skills to her leadership role in our thrombosis area.



Aubrey Ledford, Ph.D.

Disease Area Manager

Aubrey received her Ph.D. in Molecular and Cellular Pathobiology from Wake Forest University.

She brings over 10 years of pharmaceutical industry experience to CVrg including pipeline and clinical trial analysis, in-depth KOL research, conference analysis, translational research, and direct support of clinical trials. Her experience reaches all phases of product development, enabling her to understand the needs and priorities of CVrg clients.



CVrg Market Strategies™

report

Atrial Fibrillation & SPAF, 2018–2027 is a cutting-edge detailed market research report with unmatched scope, depth, and accuracy. This best-in-class resource provides a highly granular assessment of new product development, emerging trends, unmet needs, epidemiology, current treatment and market forecasts. KOL comments, SWOTs, clinical trial tracking, estimations of launch dates and target patient populations are included for products ≥Ph 2 along with regional coverage of USA, EU5, and Japan. Fresh new data and analytical observations gained throughout the year in AF/SPAF from CVrg Sentinel, Conference, Insights, and Advisory research are also included.

CVrg Sentinel™

monthly updates

CVrg continuously monitors how new scientific, clinical, regulatory and market developments are changing the commercial potential of AF/SPAF assets. This monthly delivery informs clients about what is happening in the marketplace and how it might affect their products.

CVrg Conference™

expert coverage

CVrg keeps abreast of cutting edge clinical data by attending cardio-metabolic congresses such as ACC, ESC, and AHA. Our experts carefully analyze the new data presented and deliver incisive, presentation-style reports informing subscriber organizations about what's new, what's important, and why.

*CVrg KOL Insights™

primary research

CVrg experts conduct primary research with KOLs in AF/SPAF, using their critical eyes to evaluate emerging trends, pipeline products and implications for the field. Clients may review and add to our "omnibus" discussion guides and receive detailed reports and presentations focused on answering the most pressing issues they face today. *Additional fees may apply.

CVrg Advisory™

answers to your ad-hoc inquiries

CVrg is uniquely positioned to deliver quick, thorough and reliable answers to non-proprietary questions in AF/SPAF drug markets. We are immediately equipped with comprehensive data and put our best methodologies and efforts behind each inquiry so clients receive the most accurate insight possible within a given timeframe.